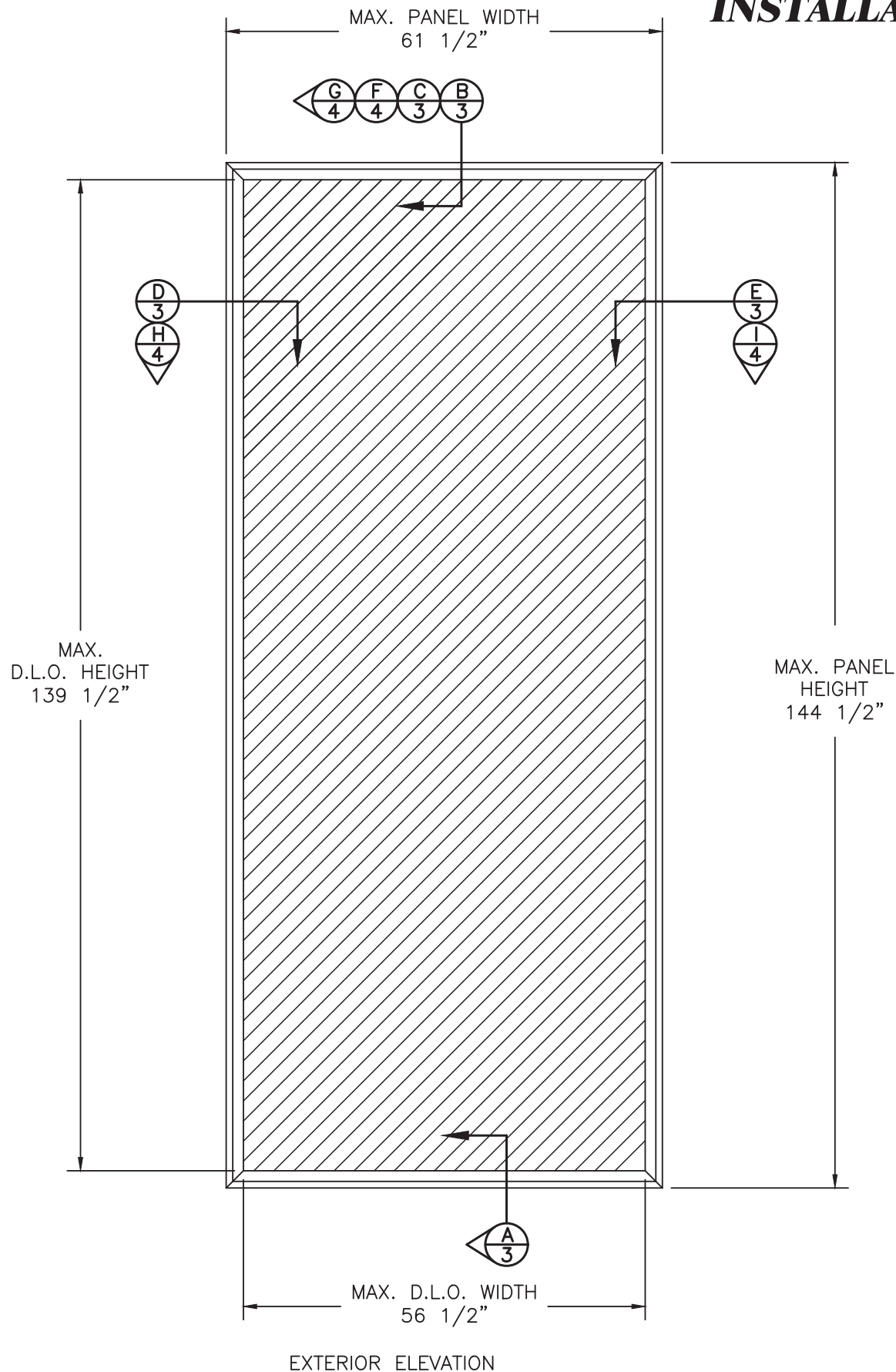


QMI

STORMSAFE SCREEN - FIXED IMPACT SCREEN - HVHZ INSTALLATION AND ANCHORAGE DETAILS



NOTES:

1. THE PRODUCT SHOWN HEREIN IS DESIGNED AND MANUFACTURED TO COMPLY WITH THE CURRENT EDITION OF THE FLORIDA BUILDING CODE INCLUDING THE HIGH VELOCITY HURRICANE ZONE (HVHZ).
2. CONCRETE, MASONRY & WOOD FRAMING TO BE DESIGNED AND ANCHORED TO PROPERLY TRANSFER ALL LOADS TO STRUCTURE. FRAMING IS THE RESPONSIBILITY OF THE ARCHITECT OR ENGINEER OF RECORD.
3. IMPACT SCREEN MATERIAL: 304 STAINLESS STEEL. PANEL FRAME MATERIAL: ALUMINUM ALLOY 6005-T5.
4. A MINIMUM GLASS SEPARATION DISTANCE OF 4" SHALL BE PROVIDED FOR ALL INSTALLATIONS.
5. TESTING TO TAS 201, TAS 202 (STATIC LOADING) AND TAS 203 DOCUMENTED IN TEST REPORT NO. CTLA-1366W-1 BY CERTIFIED TESTING LABORATORIES.
6. TESTING TO TAS 201 AND TAS 203 FOR SMALL MISSILE IMPACT (POROUS IMPACT PROTECTION DEVICE) DOCUMENTED IN TEST REPORT NO. N3182.01-450-18 BY INTERTEK.

TABLE OF CONTENTS	
SHEETS	SHEET DESCRIPTION
1	ELEVATION & NOTES
2	ANCHORING & NOTES
3	INSTALLATION DETAILS IN CONCRETE & WOOD FRAME
4	INSTALLATION DETAILS IN CONCRETE & WOOD FRAME
5	COMPONENTS & B.O.M.

MAXIMUM ALLOWABLE DESIGN PRESSURES W/2 1/2" MIN. EDGE DISTANCE	IMPACT RATING
+80.0 PSF -80.0 PSF	LARGE MISSILE IMPACT

PROJECT #423-0305

1661 GLENLAKE AVE.
ITASCA, IL 60143

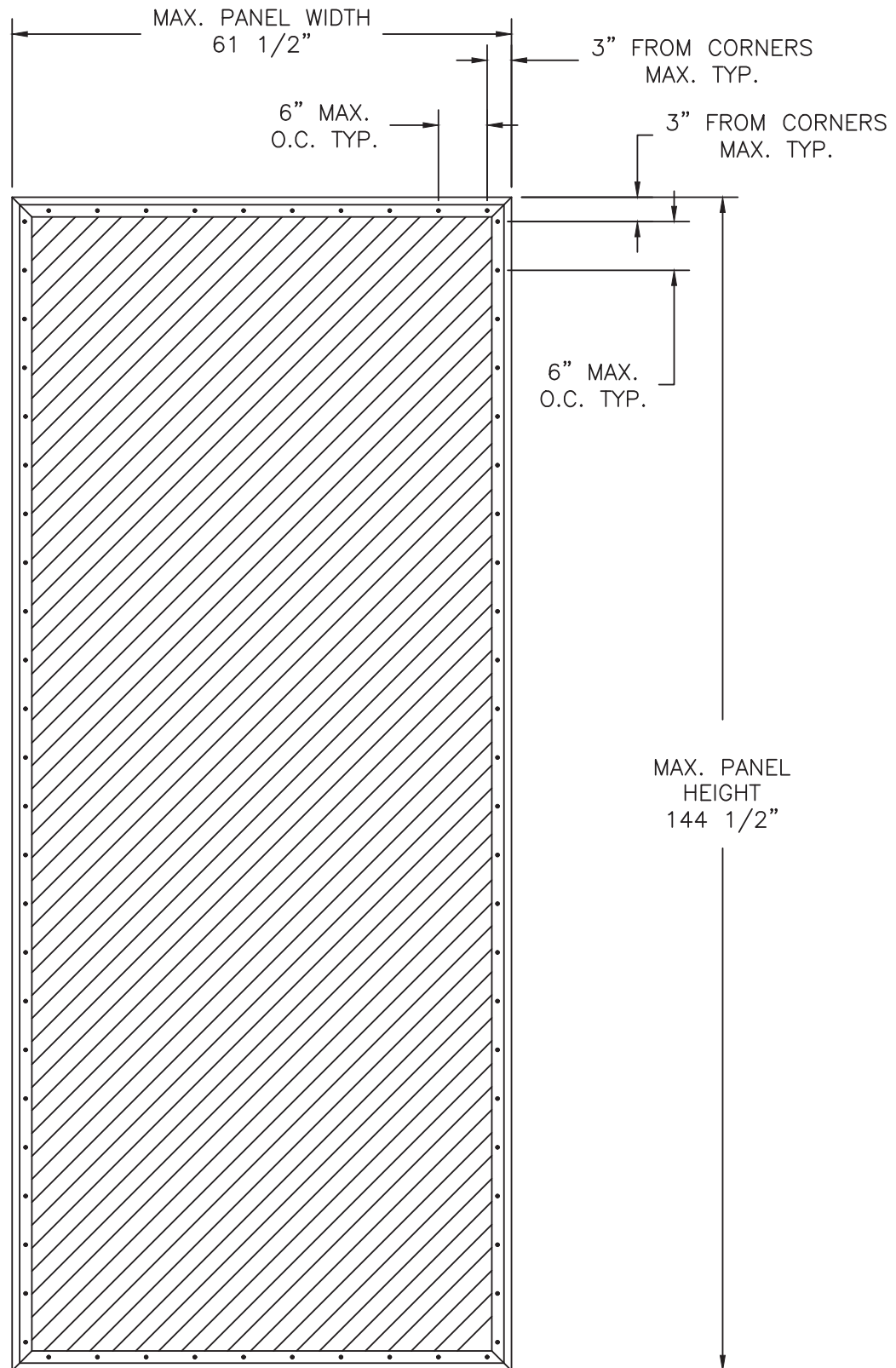
QMI
TITLE: STORMSAFE SCREEN - FIXED IMPACT SCREEN - HVHZ
GENERAL AND INSTALLATION NOTES

REV	DESCRIPTION	DATE	BY
B	UPDATED TO 8TH ED. (2023) FBC	9/25/23	RJA
A	UPDATE TO 5TH ED. (2014) FLORIDA BUILDING CODE	5/6/15	RJA

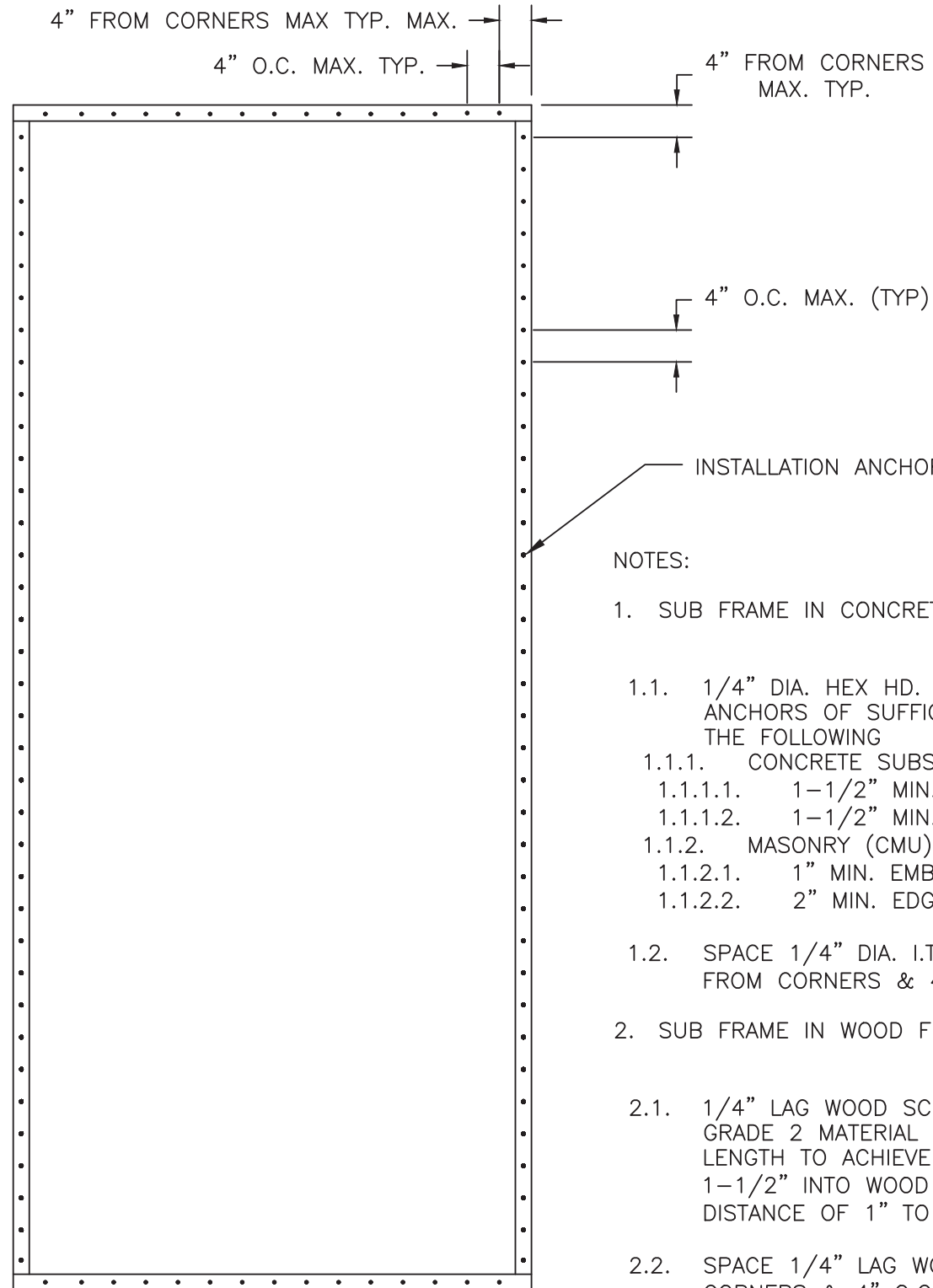
DRAWN BY:	RJA	DATE:	12/09/12
SCALE:	N.T.S.	DRAWING NO.:	QMI0003
REV:	B	SHEET:	1 OF 5

PIC
PREPARED BY:
PTC PRODUCT DESIGN GROUP, LLC
PO BOX 520775
LONGWOOD, FLORIDA 32752
Phone: 321.690.1788
Fax: 321.690.1789
Email: info@pic-corp.com
FBPE CA. NO. 25935

Robert J. Amoruso, P.E.
Florida P.E. No. 49752



SCREEN FRAME TO ALUMINUM TUBE ANCHORING EXTERIOR ELEVATION



ALUMINUM TUBE TO SUBSTRATE/WALL ANCHORING EXTERIOR ELEVATION

NOTES:

1. SUB FRAME IN CONCRETE:
 - 1.1. 1/4" DIA. HEX HD. I.T.W. BUILDDEX TAPCON ANCHORS OF SUFFICIENT LENGTH TO ACHIEVE THE FOLLOWING
 - 1.1.1. CONCRETE SUBSTRATE
 - 1.1.1.1. 1-1/2" MIN. EMBEDMENT
 - 1.1.1.2. 1-1/2" MIN. EDGE DISTANCE
 - 1.1.2. MASONRY (CMU) SUBSTRATE
 - 1.1.2.1. 1" MIN. EMBEDMENT
 - 1.1.2.2. 2" MIN. EDGE DISTANCE
 - 1.2. SPACE 1/4" DIA. I.T.W. BUILDDEX TAPCONS 4" FROM CORNERS & 4" O.C. MAX. THEREAFTER.
2. SUB FRAME IN WOOD FRAMING:
 - 2.1. 1/4" LAG WOOD SCREW ANCHORS WITH MIN. GRADE 2 MATERIAL STRENGTH OF SUFFICIENT LENGTH TO ACHIEVE A MIN. EMBEDMENT OF 1-1/2" INTO WOOD FRAMING AND MIN. EDGE DISTANCE OF 1" TO WOOD FRAMING EDGE.
 - 2.2. SPACE 1/4" LAG WOOD SCREWS 4" FROM CORNERS & 4" O.C. MAX. THEREAFTER.
3. SCREEN FRAME:
 - 3.1. #12 X 3/4" HEX HD. SMS SPACE 3" FROM CORNERS AND 6" O.C. MAX. THEREAFTER.

PROJECT #423-0305

1661 GLENLAKE AVE.
ITASCA, IL 60143

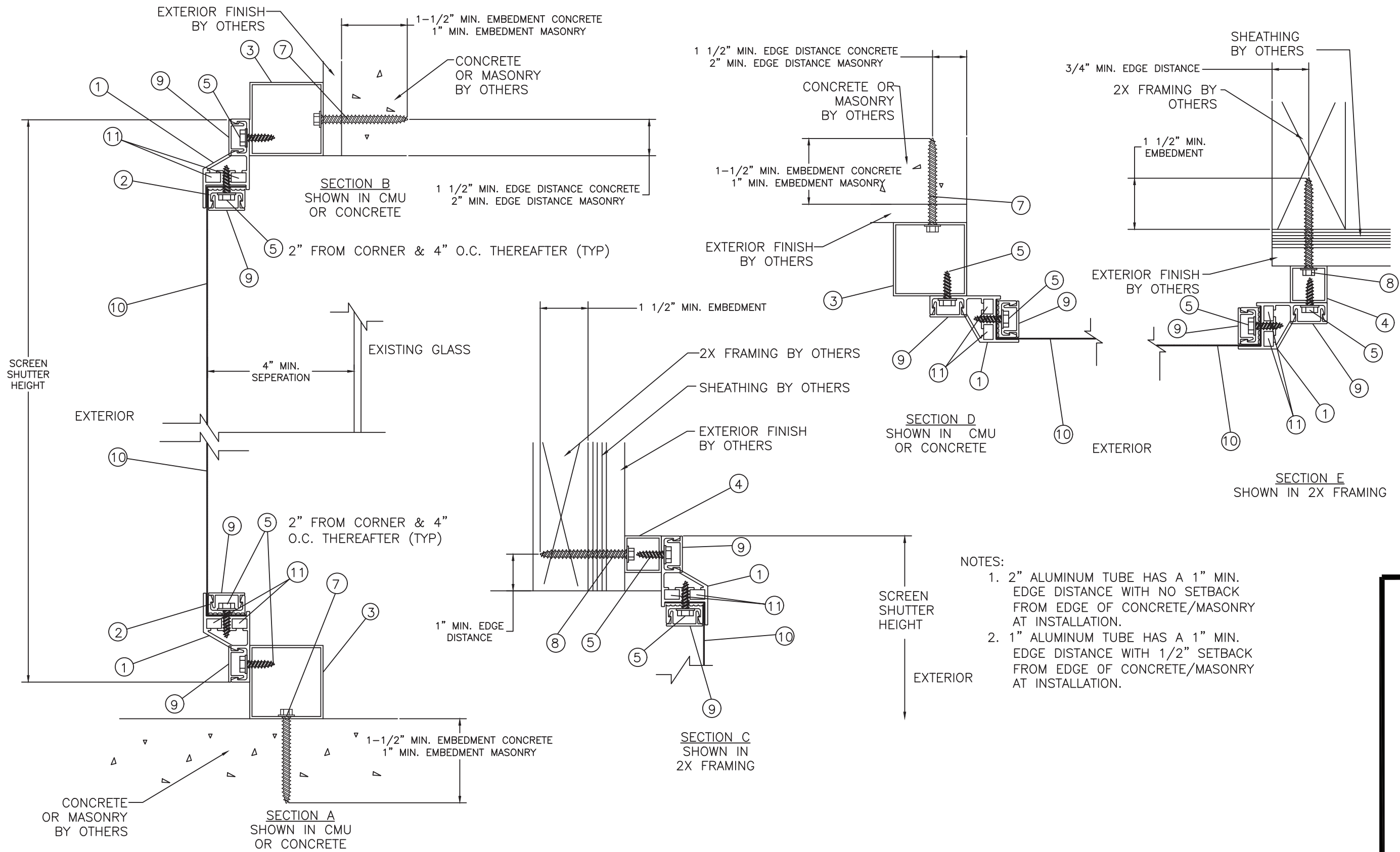
QMI
TITLE: STORMSAFE SCREEN - FIXED IMPACT SCREEN - HVHZ
ELEVATION & ANCHOR LAYOUTS

DATE:	12/09/12
DRAWING NO:	QMI0003
DRAWN BY:	RJA
SCALE:	N.T.S.
REV:	B
SHEET:	2 OF 5

REV	DESCRIPTION	DATE	BY
A	UPDATE TO 5TH ED. (2014) FLORIDA BUILDING CODE	5/6/15	RJA
B	UPDATED TO 8TH ED. (2023) FBC	9/25/23	RJA

Robert J. Amoruso, P.E.
Florida P.E. No. 49752

PTC
PTC PRODUCT DESIGN GROUP, LLC
PO BOX 520775
LONGWOOD FLORIDA 32752
Phone: 321.690.1788
Fax: 321.690.1789
Email: info@ptc-corp.com
FBPE C.A. NO. 25935

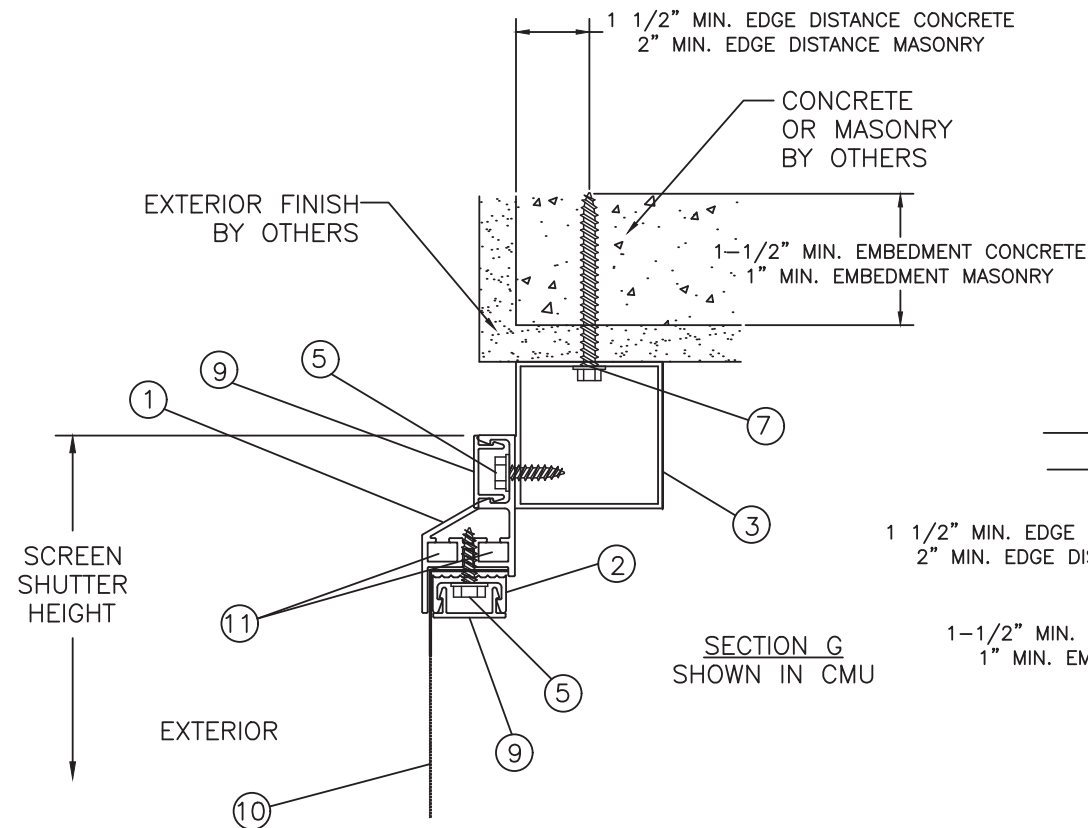


- NOTES:
- 2" ALUMINUM TUBE HAS A 1" MIN. EDGE DISTANCE WITH NO SETBACK FROM EDGE OF CONCRETE/MASONRY AT INSTALLATION.
 - 1" ALUMINUM TUBE HAS A 1" MIN. EDGE DISTANCE WITH 1/2" SETBACK FROM EDGE OF CONCRETE/MASONRY AT INSTALLATION.

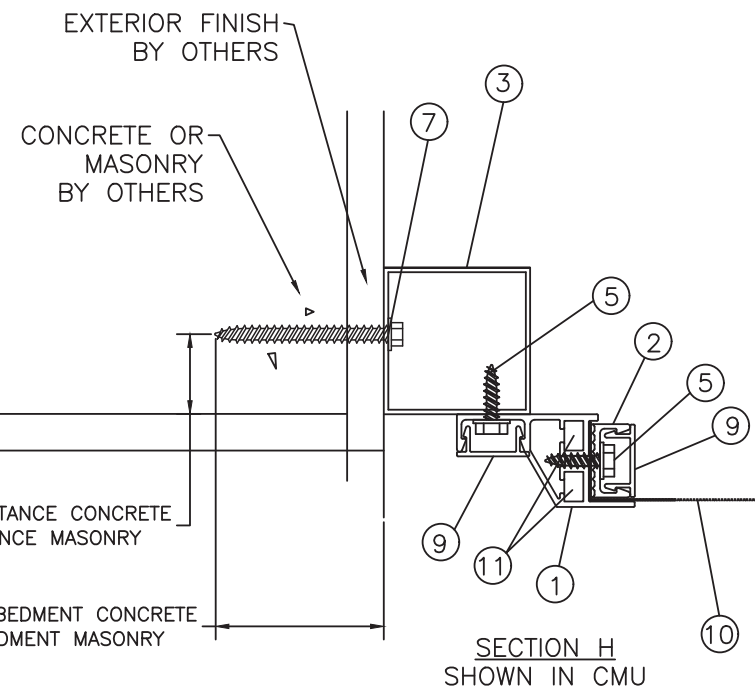
PROJECT #423-0305

1661 GLENLAKE AVE. ITASCA, IL 60143	DATE: 12/09/12	REV: 3 OF 5
TITLE: STORMSAFE SCREEN - FIXED IMPACT SCREEN - HVHZ VERTICAL & HORIZONTAL SECTIONS	DRAWING NO: QM10003	REV: B
PREPARED BY: RJA	SCALE: N.T.S.	REV: B
PTC PRODUCT DESIGN GROUP, LLC PO BOX 520775 LONGWOOD, FLORIDA 32752 PHONE: 321.690.1788 FAX: 321.690.1789 EMAIL: info@ptc-corp.com	DATE: 12/09/12	REV: B
BY: RJA	DATE: 9/25/23	BY: RJA
DESCRIPTION	DATE: 5/6/15	BY: RJA
DESCRIPTION	DATE: 5/6/15	BY: RJA

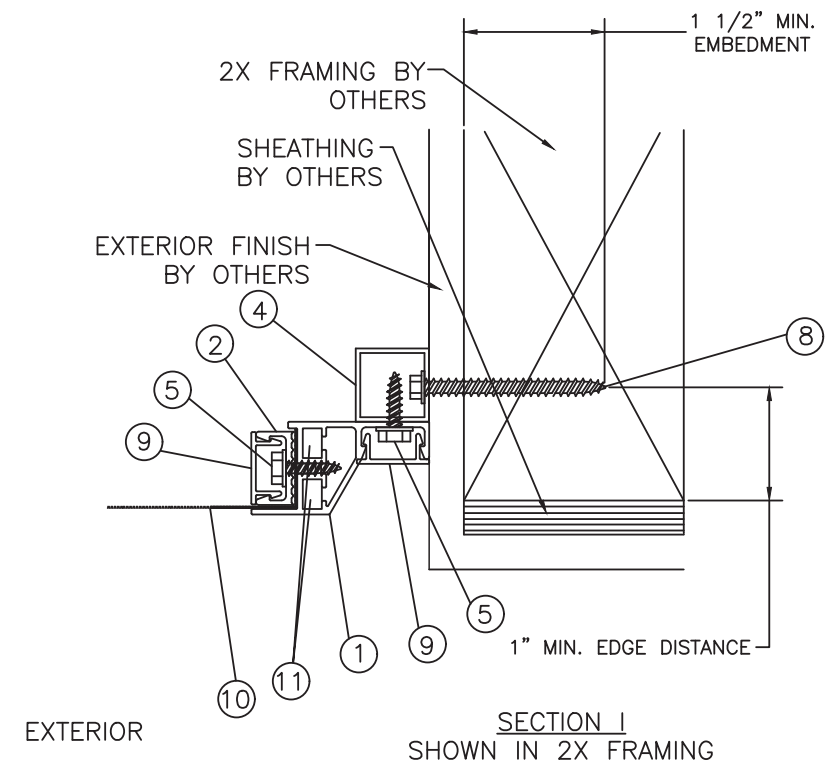
Robert J. Amoruso, P.E.
Florida P.E. No. 49752



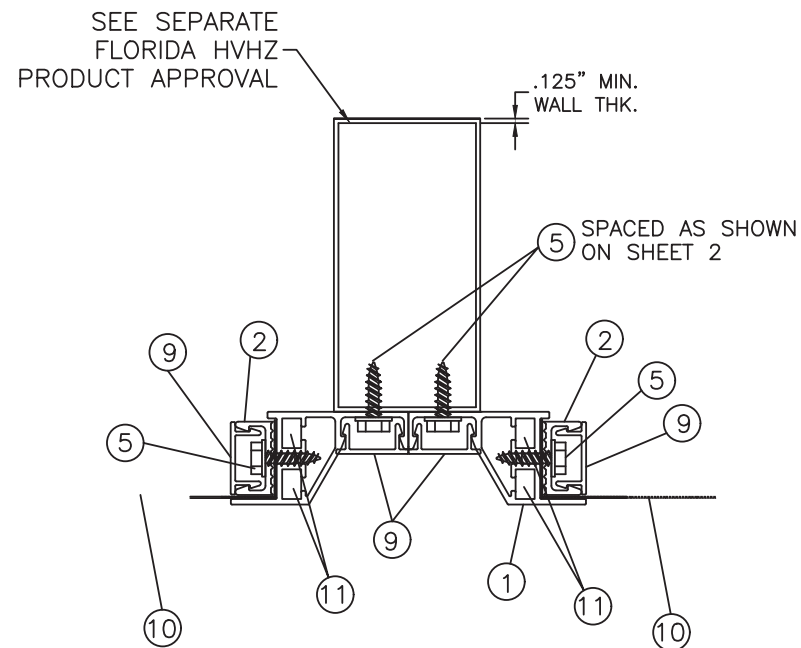
SECTION G
SHOWN IN CMU



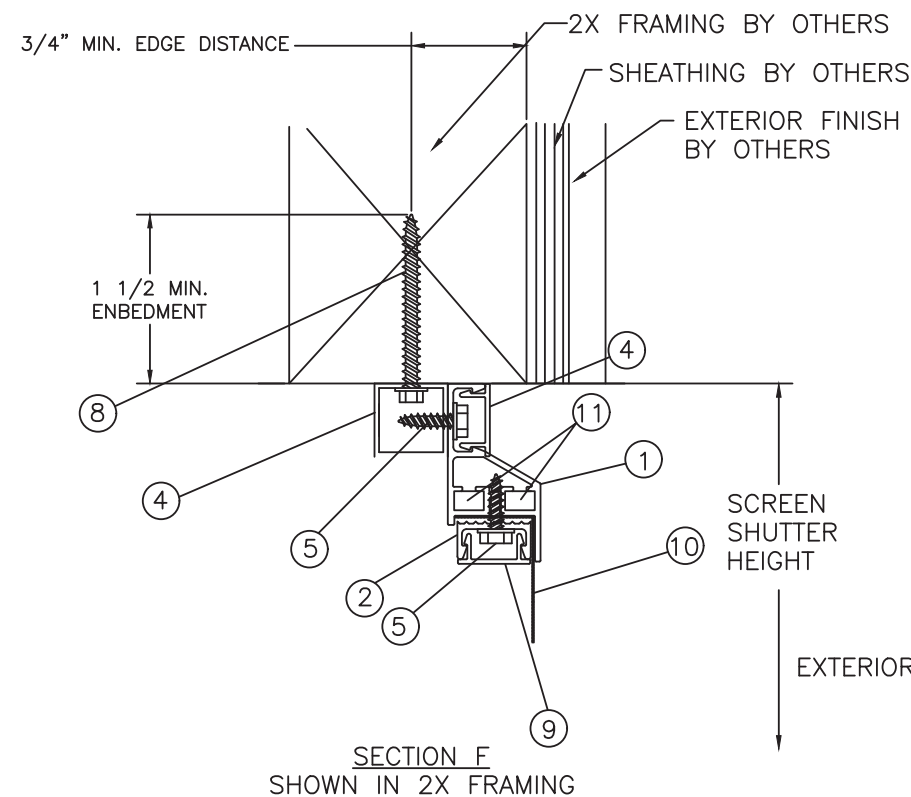
SECTION H
SHOWN IN CMU



SECTION I
SHOWN IN 2X FRAMING



OPTIONAL ALUMINUM MULLION
INSTALLATION, SEE SEPARATE
FLORIDA HVHZ PRODUCT APPROVAL



SECTION F
SHOWN IN 2X FRAMING

NOTES:

1. 2" ALUMINUM TUBE HAS A 1" MINIMUM SETBACK FROM EDGE OF CONCRETE/MASONRY AT INSTALLATION.
2. 1" ALUMINUM TUBE HAS A 1 1/2" MINIMUM SETBACK FROM EDGE OF CONCRETE/MASONRY AT INSTALLATION.

PROJECT #423-0305

1661 GLENLAKE AVE.
ITASCA, IL 60143



TITLE: STORMSAFE SCREEN - FIXED IMPACT SCREEN - HVHZ
VERTICAL & HORIZONTAL SECTIONS

DATE:	12/09/12
DRAWING NO.:	QMI0003
SHEET:	4 OF 5
DRAWN BY:	RJA
SCALE:	N.T.S.
REV:	B

REV	DESCRIPTION	DATE	BY
A	UPDATE TO 5TH ED. (2014) FLORIDA BUILDING CODE	5/6/15	RJA
B	UPDATED TO 8TH ED. (2023) FBC	9/25/23	RJA

Robert J. Amoruso, P.E.
Florida P.E. No. 49752

